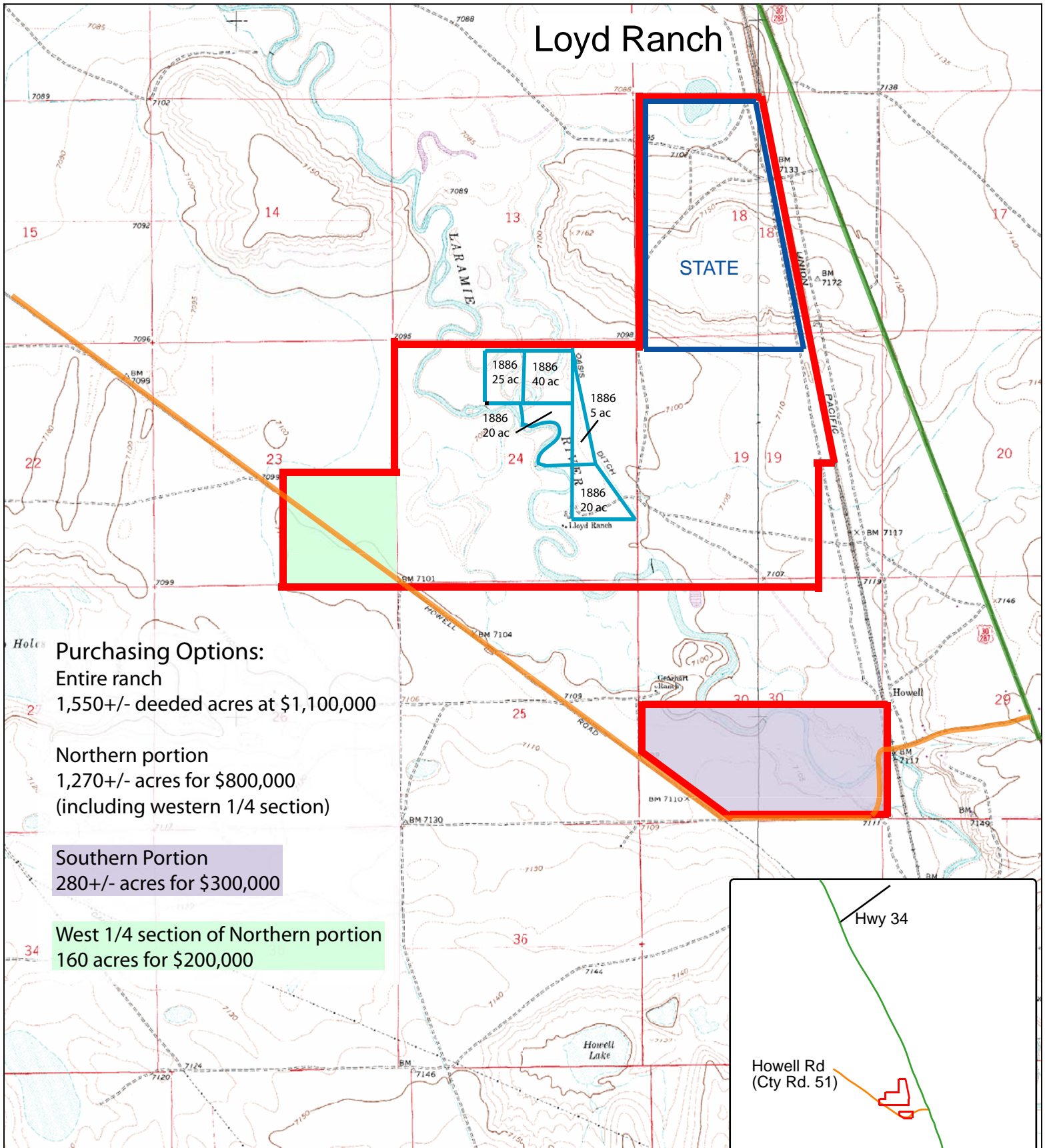


# Lloyd Ranch



- Purchasing Options:**
- Entire ranch  
1,550+/- deeded acres at \$1,100,000
  - Northern portion  
1,270+/- acres for \$800,000  
(including western 1/4 section)
  - Southern Portion  
280+/- acres for \$300,000
  - West 1/4 section of Northern portion  
160 acres for \$200,000

Ranch Boundary - - - - - **RED**  
 Wyoming State Lease - - - - - **BLUE**  
 Hwy 287 - - - - - **GREEN**  
 Ranch Access Roads - - - - - **ORANGE**

All maps and other information, as presented, are for informational purposes only. Accuracy is not guaranteed, fence lines may or may not correspond with property boundaries. Buyer is responsible for verification of all facts to their satisfaction.

**Oasis Ditch Adjudicated Water Rights**

Township 17 N, Range 74W  
 Section 24: 115 acres  
 1.64 CFS  
 1886

